

Applications:

LCC cable tray conduit clamps are used for installation on cable tray side rails with inside flanges (requiring inside tray mounting) and outside flanges; LCCF clamps are for use exclusively on inside flanges.

LCC/LCCF cable tray conduit clamps:

- Provide a means of clamping metal conduit (rigid steel or aluminum, IMC and EMT) to cable tray to provide for the exit of power and/or control cables from tray
- Provide a means to firmly bond exit conduit to cable tray for best grounding continuity
- Provide strong mechanical support for exit conduits and cables
- Can be used indoors or outdoors, wherever cable tray systems are installed
- Facilitate the safe exit of cables from tray – insure protection of cables from damage

Features:

- Quick and easy installation – low installed cost. Merely tighten clamp nut and/or set screw(s)
- Swivel hook clears conduit. No disassembly required for installation
- No drilling or welding necessary for installation
- Provides superior ground continuity between conduit and cable tray
- Clamps conduit at any angle with relation to tray – facilitates wire pulling, minimizes conduit bending
- Malleable iron body provides great strength
- Knurled body has no-slip surface for conduit and tray – positive grip assured
- Compact design has low profile – minimum tray space required for assembly
- Design accommodates all popular types of cable tray
- Accommodates wide range of conduit sizes – 1/2" through 4"

LCCF features:

- Outside mounting facilitates inside rail installation
- Adjustable hook assures positive grip on inside rail
- Accommodates 3/4" through 1 3/4" wide flange

Certifications and Compliances:

- UL Standard: 467 (Grounding and Bonding Equipment)

Standard Materials:

- Body – cast iron
- Hook – steel
- Set screws and clamping nut – steel
- Hook cap – vinyl

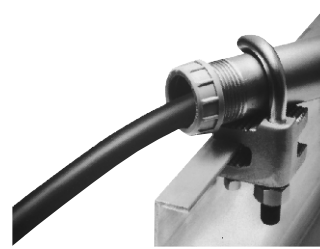
Standard Finishes:

- Cast iron – electrogalvanized and aluminum acrylic paint
- Steel – zinc electroplate
- Vinyl – natural

Conduit Size Ranges:

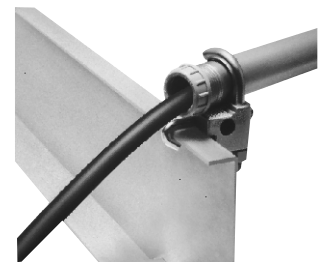
- 1/2" to 4"

LCC



For use with outside rail tray

LCCF



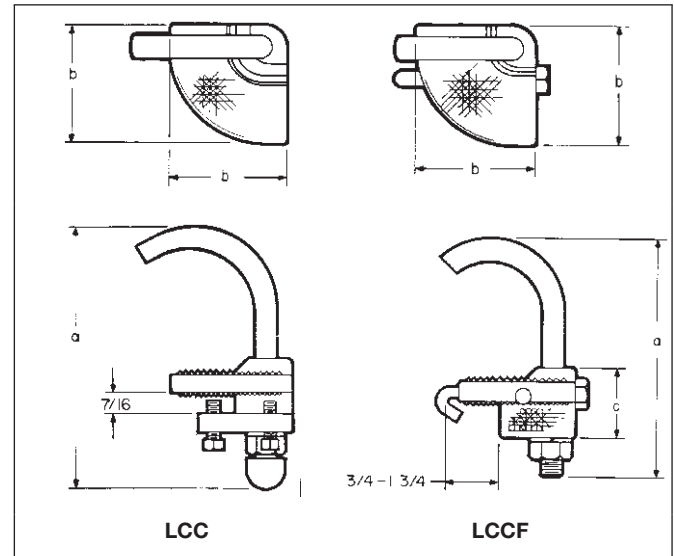
For use with inside rail tray

Ordering Information

Conduit Size	Cat. #	Cat. #
1/2	LCC1	LCCF1
3/4	LCC2	LCCF2
1	LCC3	LCCF3
1 1/4	LCC4	LCCF4
1 1/2	LCC5	LCCF5
2	LCC6	LCCF6
2 1/2	LCC7	LCCF7
3	LCC8	LCCF8
3 1/2	LCC9	LCCF9
4	LCC010	LCCF010

Dimensions

In Inches:



Conduit Size	LCC		LCCF		
	a	b	a	b	c
1/2	3 ⁹ / ₁₆	1 ¹¹ / ₁₆	3 ¹ / ₈	1 ⁵ / ₈	1 ¹¹ / ₃₂
3/4	3 ⁷ / ₁₆	1 ¹¹ / ₁₆	3 ¹¹ / ₃₂	1 ⁵ / ₈	1 ¹¹ / ₃₂
1	3 ⁹ / ₁₆	1 ¹¹ / ₁₆	3 ¹⁹ / ₃₂	1 ⁵ / ₈	1 ¹¹ / ₃₂
1 1/4	4	1 ¹¹ / ₁₆	3 ¹⁵ / ₁₆	1 ⁵ / ₈	1 ¹¹ / ₃₂
1 1/2	4 ¹³ / ₁₆	2 ¹ / ₁₆	4 ³ / ₄	2 ³ / ₄	1 ¹¹ / ₁₆
2	5 ⁹ / ₁₆	2 ¹ / ₁₆	5 ¹ / ₄	2 ³ / ₄	1 ¹¹ / ₁₆
2 1/2	5 ¹³ / ₁₆	2 ¹ / ₁₆	5 ³ / ₄	2 ³ / ₄	1 ¹¹ / ₁₆
3	6 ¹³ / ₁₆	3 ³ / ₄	6 ³ / ₄	3 ¹ / ₁₆	2 ³ / ₁₆
3 1/2	7 ⁹ / ₁₆	3 ³ / ₄	7 ¹ / ₄	3 ¹ / ₁₆	2 ³ / ₁₆
4	7 ¹³ / ₁₆	3 ³ / ₄	7 ³ / ₄	3 ¹ / ₁₆	2 ³ / ₁₆